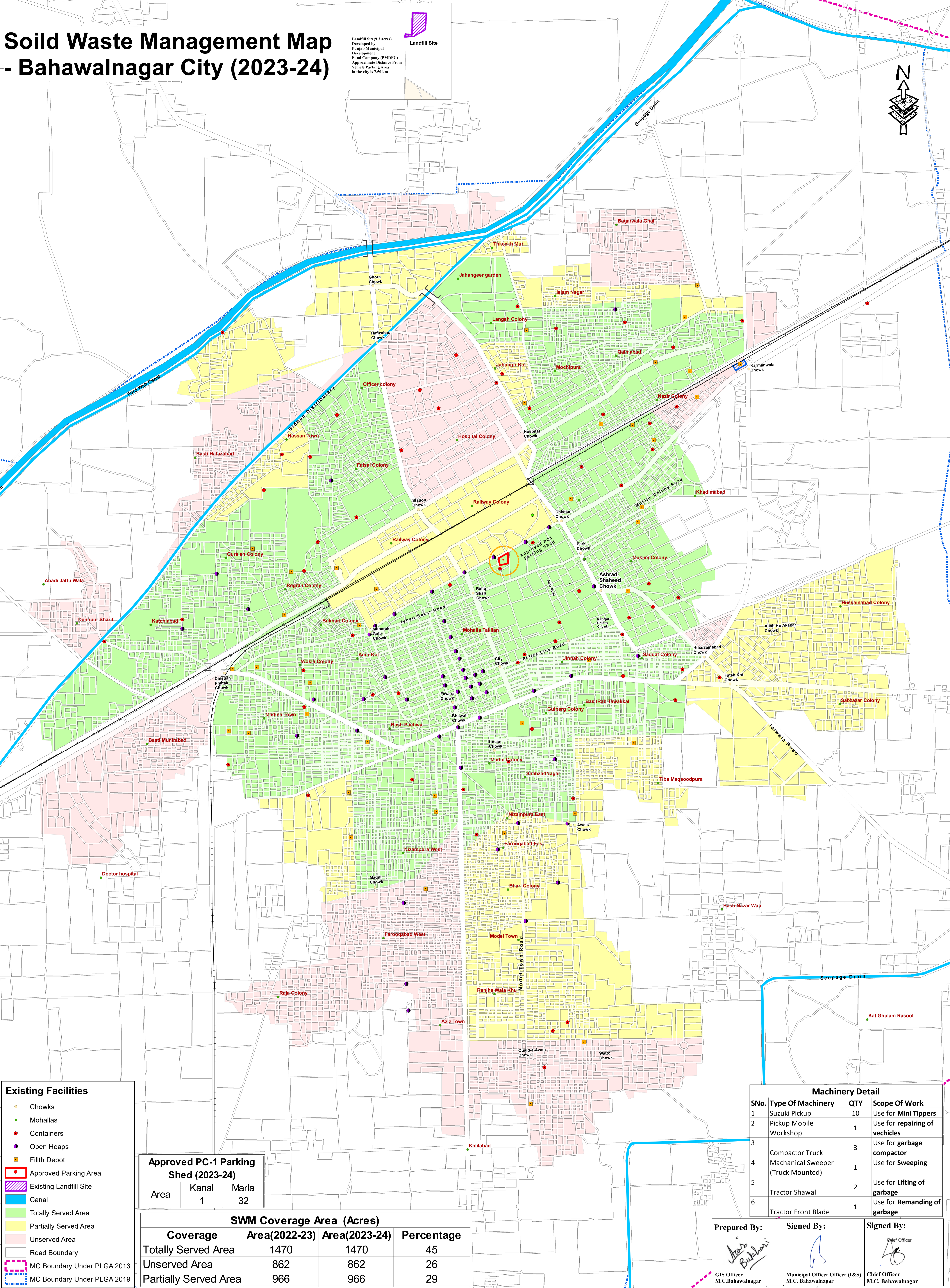
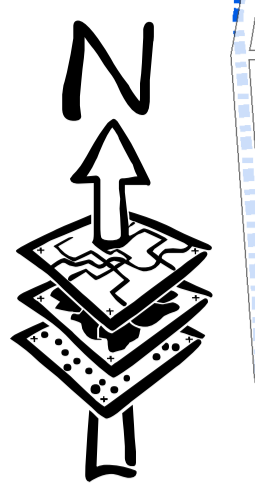


Soild Waste Management Map - Bahawalnagar City (2023-24)

Landfill Site (0.3 acres)
 Developed by Punjab Municipal Development Fund Company (PMDFC)
 Approximate Distance From Vehicle Parking Area in the city is 7.50 km



- Existing Facilities**
- Chowks
 - Mohallas
 - Containers
 - Open Heaps
 - Filth Depot
 - Approved Parking Area
 - Existing Landfill Site
 - Canal
 - Totally Served Area
 - Partially Served Area
 - Unserved Area
 - Road Boundary
 - MC Boundary Under PLGA 2013
 - MC Boundary Under PLGA 2019

Approved PC-1 Parking Shed (2023-24)

Area	Kanal	Marla
	1	32

SWM Coverage Area (Acres)

Coverage	Area(2022-23)	Area(2023-24)	Percentage
Totally Served Area	1470	1470	45
Unserved Area	862	862	26
Partially Served Area	966	966	29

Machinery Detail

SNo.	Type Of Machinery	QTY	Scope Of Work
1	Suzuki Pickup	10	Use for Mini Tipppers
2	Pickup Mobile Workshop	1	Use for repairing of vehicles
3	Compactor Truck	3	Use for garbage compactor
4	Mechanical Sweeper (Truck Mounted)	1	Use for Sweeping
5	Tractor Shawal	2	Use for Lifting of garbage
6	Tractor Front Blade	1	Use for Remanding of garbage

Prepared By: *Arif Bhatti*
 GIS Officer
 M.C. Bahawalnagar

Signed By: *[Signature]*
 Municipal Officer Officer (I&S)
 M.C. Bahawalnagar

Signed By: *[Signature]*
 Chief Officer
 M.C. Bahawalnagar